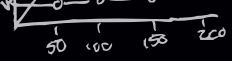
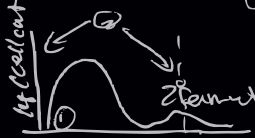


e^g

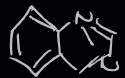
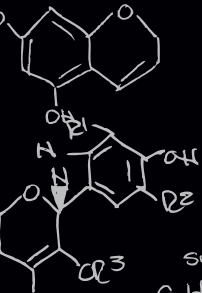
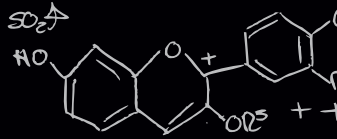
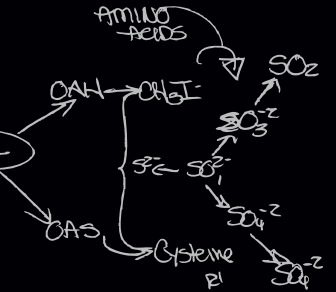
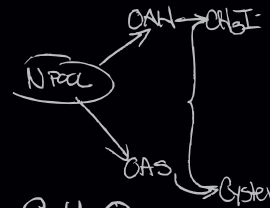
by Educated Guess

× (NORTH COAST + 2016)

CABERNET SAUVIGNON



all cell population
CH₃CHO



Wine = REDU
(SO₂ prevents oxidation & both fermentation)

sucrose + water -> glucose + fructose
C₆H₁₂O₆ + H₂O -> C₆H₁₂O₅ + H₂O



Educated Guess

The primary source for this Cabernet Sauvignon is from the famed Beckstoffer Crimson Ridge Vineyard which is known for its volcanic soils and western facing orientation, providing the wine with amazing structure and depth. The Oakville portion of the blend comes from a vineyard tucked away between Groth and Rudd Wineries. Our Cabernet Sauvignon opens with concentrated aromas of dark berries, plums, and a hint of cracked peppercorn. It is luscious and full bodied, excites the senses, and is packed full of exotic flavors of tea spice, dark chocolate, and fruit preserves.

—Macario Montoya, Winemaker

2016 North Coast Cabernet Sauvignon

Appellation

75% Lake County

15% Oakville, Napa Valley

10% Clarksburg

Varietal

90% Cabernet Sauvignon

10% Petite Sirah

Cases Produced 25,633

Suggested Retail Price \$20